

Annual Report 2019

financial year 190401-200331

PET Annual General Meeting, 4 November 2020, 19–20hrs by Zoom.

Table of Contents:

| | |
|---------------------------|-----------|
| Chair's Foreword | 2 |
| Affordable Housing | 5 |
| Carbon Strategy | 7 |
| Caring Community | 11 |
| Finance | 13 |

Chair's Foreword

by Roger Doudna

Park Ecovillage Trust (PET) had another good, albeit challenging year..

Due to an obligatory 'change of use' (from 'domestic' to 'business') application to Moray Council for the West Whins Common Facility, the parameters of our agreement with Duneland and West Whins residents changed considerably.

Long story short, we were obliged to let it go, which means the meeting space, kitchen and especially the community library (again) that had been relocated there has been 'mothballed'.

On the upside, however, in June 2019 a Village Green Upgrade project was undertaken at the Park, administratively supported by PET. In its role of community benefit charity, PET served as the project's 'piggy bank': by receiving the Appeal donations, we submitted the total donation amount to UK GIFT AID, which adds 25p to every 100p donated. The result: on the £1,623 collected PET generated an extra £405.75. PET is happy to similarly support ecovillage entities whose community projects fit with our mission & aims.

PET also holds Adriana Bijman's Artist Support Fund, created from her legacy to the community. Pat Elison, fund administrator, tells us that the first two beneficiaries this year were Maria Olsthoorn and Andrea Turner.

[Carbon](#) — In collaboration with Goran Wiklund and Amanda Haworth, PET prepared its third annual community carbon footprint assessment that informed us that we have collectively cut our total carbon emissions by 25% since 2018. Goran's follow up assessment for 2019-20 revealed that we reduced our community footprint yet again to an average of 7.4 tCO₂e for the year, BEFORE the coronavirus pandemic hit us in mid-March 2020.



Goran also did a footprint assessment for the Foundation’s April “Climate Change and Consciousness 2019” conference and learned that it alone had produced a footprint of approximately 10% of the community’s annual footprint (in addition to its educational and financial benefits of course). Goran also forged an agreement with the Foundation to offset ALL their guests’ travel here from 2020 onwards.

Housing – PET’s Housing Division also experienced a challenging, but ultimately rewarding, year. Marcus Lindner handed over our property portfolio to Paddy Atkinson who became our Housing Director, as well as our Project Manager.

Paddy superintends virtually all our properties including four units in East Whins, 6 ‘affordable units’ in West Whins, and, prospectively, an additional 8 affordable units in North Whins. Details in Paddy’s Annual Housing Report.

Caring Community – Cornelia Featherstone developed PET’s ‘Care In Community’ division and raised funds for a new Community Care Coordinator. Marcus Lindner is now the PET director who represents the Management Committee of what is now called the Caring Community Circle. His report reveals relevant developments in the CCC division.

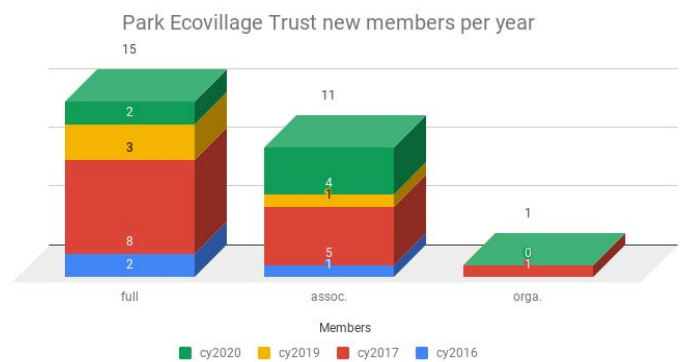
Finances – PET’s finances continue to be adroitly managed by Fasil Bogale as our Finance Director, and he is ably assisted by Stephen Couling who handles our accounts. Fasil also deals professionally with PET’s lawyers, the Scottish government, Ecology Bank and Duneland. His annual report indicates that PET’s net asset value as a charity in March 2020 was £167,634.

Despite the challenges of the past year, the PET board continues to serve our ecovillage community, and we continue to welcome new operators and directors from those who may feel so moved.

We thank all our Members for their continuing active support of our work:

| | Full | Associate | Orga | |
|-----------------------------------|------|-----------|------|--------------|
| | 80% | 19% | 1% | 100% |
| PARK ECOVILLAGE TRUST | | 1 | | total |
| active members (act.emails) | 86 | 21 | 1 | 108 |
| non-active members (non-reacting) | 8 | 9 | 0 | 17 |
| total members | 94 | 30 | 1 | 125 |

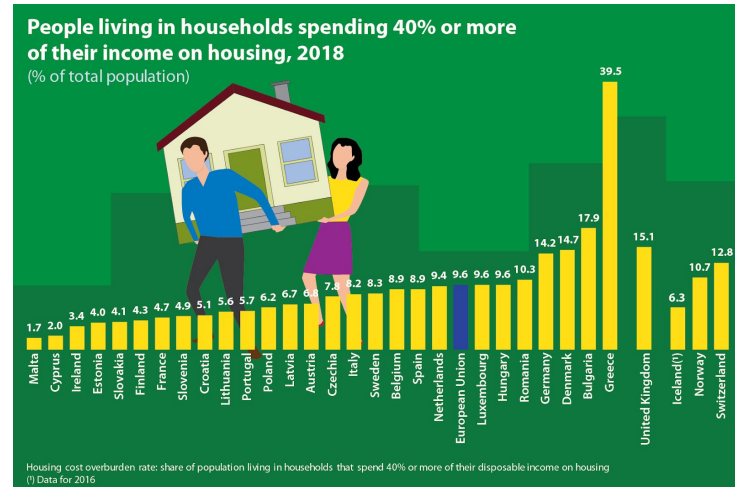
@ 2020-10-1



Affordable Housing

by Paddy Atkinson, director
on behalf of the aff.Housing Group

It was quite an active year¹ for PET Housing. At the beginning of the year, the acting Housing Director was Marcus Lindner. Paddy Atkinson assumed the position from Marcus in March 2020.



ec.europa.eu/eurostat

East and West Whins

PET continues to enjoy and support our tenants in East and West Whins We also continue to support our partners in the Shared Houses at East Whins.

After reflecting on the suitability of the factoring arrangement with New Findhorn Directions PET took back full responsibility for maintenance and administration of its assets. Since such a time Paddy Atkinson has fulfilled the property management role including annual inspections, repairs and emergency maintenance.

The West Whins mini-district heating system continues to function reliably and Renewable Heat Incentive payments provide a moderate income for the Trust.

The West Whins Communal Facility was closed by Moray Council due to a deemed improper use of the building which made PETs lease for the property void. As a result the communal washing machine was relocated by tenants to an enclosure under the stairs to the rear of the property. A formal agreement has since been struck between PET and tenants in relation to the laundry facility. The West Whins Communal Facility still remains up for sale.

Based on changes imposed by New Findhorn Directions (NFD) all PET tenants now read their own electricity meters and report directly to NFD.

PET renewed its landlord registration in the early part of 2020.

North Whins Affordable Housing

The North Whins Section 75 affordable housing [project](#) has progressed well despite delays caused by the global pandemic. The project will deliver 8 properties for affordable rent; 4 two bedroom and 4 studios. Once delivered this will take PET closer to its goal of 25 affordable homes by 2025.

¹ This report covers the period 2019 to date. This allows for reporting on events that began in 2019 and are complete or nearing completion in 2020. Readers are therefore able to get a fuller picture.

Following the conceptual design work by Johanna Hykras PET submitted an application to the Scottish Rural Housing Fund for grant support and was successful. We are very grateful to the Scottish Government for its continued support.

An application for planning permission followed but a formal decision was delayed 3 months due to the lock-down. A planning decision was finally made in June 2020. Following this PET proceeded to building warrant application which was granted in September 2020. Construction tendering was undertaken and the contract awarded to Green Leaf Design & Build Ltd. Site works are scheduled to commence in October 2020 and will carry on throughout 2021. (Check the website for progress reports & images.)

Collaboration

In September 2019 PET was awarded an Energy Technology Partnership grant in collaboration with University of Strathclyde to investigate integrated smart energy systems options for the North Whins affordable housing project. This project investigated the existing mini-district heating system at West Whins to build on existing success. Several options were explored for the North Whins affordable housing project with an emphasis on low carbon and low energy costs. The project identified an exciting opportunity to make use of Living Machine wastewater (which is pumped past the development site) to achieve a wastewater-to-heat system using a heat pump. Based on this work an expression of interest was submitted to the Scottish Government's Community and Renewable Energy Scheme (CARES). In response to this expression of interest PET was invited to submit a formal application to CARES. PET submitted an application in September 2020 and a formal response is expected by mid-October.

Carbon Strategy

by Roger Doudna, director
on behalf of the Carbon Strategy Group







Reviewing my bi-monthly reports from 1st April 2019 to 31st March 2020, I am astonished by how much good work took place on the climate front that year, almost all of which was significantly 'eclipsed' by the coronavirus pandemic and ensuing national 'lockdown' that hit us all in mid-March 2020. And it's at least 'interesting' that the changes attendant upon lockdown have been described as 'climate change at warp speed', affecting everything from food to flying.

The relevant pre-lockdown highlights include:

- 🌍 The Foundation's climate conference was the big 'consciousness raising' event of the year here. Some 250 folks gathered in April 2019 to meet, greet, commiserate and indeed collaborate upon a raft of initiatives around the world. It was also a perfect opportunity to practise some serious carbon reduction initiatives, or at least offset travel here. I'm happy to report that the Foundation, at the instigation of Graham Meltzer, resident coordinator, did offset their presenters' travel here with PET. Sadly, only 2% of conference participants followed this example, at least with PET. The upside of this equation is that it still constituted twice the amount of offsetting then practiced by air travellers, which the BBC estimated at about 1% of the air travelling public.
- 🌍 In the lead up to CCC19, Goran Wiklund completed his assessment for PET of the community's [carbon footprint for 2018](#). It revealed that our total footprint had dropped 25% from 13.4 tonnes of CO2 per resident the previous year to 8.3 tonnes in 2018, but did so primarily because guest numbers had also dropped. So, sadly, it's difficult to make any direct comparisons, but positive in that the community did reduce its emissions overall.
- 🌍 The Findhorn Foundation, largely at the instigation of previous Steward Gabrielle Buist, has been a good partner with PET and set an example by taking steps to reduce its carbon footprint. In addition to offsetting travel by CCC19 presenters, they are now offsetting the travel of their Trustees, many of whom travel here by plane twice a year for their meetings. In collaboration with Goran Wiklund, they have agreed to offset all their programme guests next year by charging them £7 each and explaining why they are doing so.

The terms of the agreement are worth reiterating here:

- 🌍 FF will add £7 to every programme price in 2020 in order to offset the cost of its guests' travel here. (This fee was recommended by Goran on the basis of it being the average travel footprint of FF's guests in 2018.)

- ♀ FF will explain to their guests why they are doing so (i.e. as an institutional response to climate change) and encourage offsetting across the board.
 - ♀ FF will send revenues accrued from the first 6 months of guest programmes to PET, and do likewise after the ensuing 6 months.
 - ♀ These monies will be forwarded (excepting those going to PET's core costs for providing this service) to the "Project Reduce Deforestation in Brazil" initiative, one of several offered on PET's website, and guests will be informed of this intention.
-  I also conducted a webinar called '[Reasons For Hope](#)' in association with the Foundation's 'Findhorn Live' department. I interviewed three Findhorn Fellows on their respective innovative contributions to the climate issue. They are Albert Bates (The Farm in Tennessee), Paul Allen (Centre For Alternative Technology in Wales) and Kosha Joubert (Global Ecovillage Network here at Findhorn), all of whom have attended UN Climate COPs (Conferences Of Parties) and devised their own responses thereto. It 'aired' several weeks before CCC19 in April and continues to be available on the Foundation's website where it has had 1,176 views to date (201010).
-  Kay Lynne Sherman, former community member and Findhorn Fellow, made several visits here to share her work with Paul Hawken's DRAWDOWN initiative and attendant training. She returned last November with her team to present a week-long training as part of the Building Bridges division of the Foundation's guest offerings.
-  Eveline Rodenburg was inspired by one of Kay Lynne's earlier visits, and has established a Findhorn Ecovillage Community project with the assistance and encouragement of PET, Duneland and many others. She is turning domestic food waste back into food, one of the most effective responses to climate change identified by the Drawdown programme.
-  And of the 100 global initiatives that Paul Hawken describes in his acclaimed DRAWDOWN book (on which Kay Lynne's offering is based), about 22 of them are already in evidence here in our Findhorn [community](#), albeit often in 'incipient' forms. In descending order of 'bang for the carbon buck', they include: 1. Onshore Wind (Findhorn Wind Park). 2. Reduced food waste (Eveline and FF kitchens). 3. Plant Rich Diet (FF). 4. Educating Girls & Family Planning (Ecologia). 5. Rooftop Solar (Appropriate Energy Systems & many homes). 6. Regenerative Agriculture (Findhorn Garden, Cullerne, Newbold, Permaculture, etc). 7. Afforestation (Trees For Life). 8. Geothermal (Moray Art Centre). 9. Electric Vehicles (Moray Car Share). 10. District Heating (FF & Soillse's Biomass Boilers). 11. Insulation (all new buildings). 12. LED Lighting (Community Centre & Universal Hall). 13. Solar Water (AES). 14. Heat Pumps (the Whins). 15. Airplanes (PET & FF's Offsetting). 16. Household Recycling (virtually everyone). 17. Smart Thermostats ('Origin' initiative). 18. Composting (most residents). 19. Electric Bikes (Moray Car Share, Alex Walker, etc). 19. Green Roofs (Guest Lodge, Youth Building, John Talbot's Barrel). 20. Energy Storage (Findhorn College w/Findhorn Wind Park). 21. Microgrids (Findhorn Wind Park & New Findhorn Directions). 22. Retrofitting (FF housing).

- Upon their return to the community from India in summer 2019, Michael and Gail Shaw convened invitational gatherings at their home to share their concerns evoked by Jem Bendell's recent treatise on "Deep Adaptation" to climate change. Long story short, the assembled group directed their attention to what more we can do here to improve our sustainability. Acting in my capacity as chair of PET and its Carbon Strategy Division, I informed the group of the National Lottery's new Climate Community Fund and the £100 million it intends to allocate this autumn to UK communities that are taking significant action to address climate change. I also volunteered to respond to the Lottery's invitation to respond to the preliminary set of questions whose responses helped them shape their fund criteria (which they have yet to announce). In so doing, I attempted to synthesize the initiatives spoken of by the group here, plus earlier ones undertaken in the community. Sadly, the National Lottery was not receptive either to my Letter of Interest or that submitted by GEN with whom we were in 'friendly competition'.
- The local Extinction [Rebellion](#) group was instrumental in 'persuading' Moray Council to declare its intention to become carbon neutral by 2030, and I was delighted to be there with my PET hat on when the Councillors emerged from the HQ in Elgin to blend cordially with the XR group demonstrators. It almost felt like a festival!
- Carbon Offsetting results from service inception in december 2017 to 200331:

| tCO2 | 171231-190331 | 190401-200331 | numbers | 171231-190331 | 190401-200331 |
|--------------------------------|---------------|---------------|--------------------------------|---------------|---------------|
| guest/visitor | 40.0 | 114.2 | guest/visitor | 18 | 32 |
| conference participant 190901> | | 0.0 | conference participant 190901> | | 0 |
| ffstaff & ltguest | 26.0 | 21.2 | ffstaff & ltguest | 12 | 3 |
| nfa | 64.0 | 118.0 | nfa | 22 | 30 |
| business | 50.0 | 34.8 | business | 2 | 1 |
| res (other) | 26.0 | 23.6 | res (other) | 7 | 2 |
| other (non-res) | 35.0 | 45.7 | other (non-res) | 16 | 10 |

| tCO2 | 171231-190331 | 190401-200331 |
|------------------------------|---------------|---------------|
| cmty projects Africa >190901 | 20.0 | 16.8 |
| rainforest Brazil | 113.0 | 163.6 |
| reforestation Kenya+ | 49.0 | 97.8 |
| tree planting UK+ | 42.0 | 35.3 |
| windpower India | 17.0 | 39.7 |
| cookstoves Kenya 190901> | | 3.9 |
| boreholes Uganda 190901> | | 0.0 |

If you still need want to offset your emissions (from wherever you are) [click here](#). Detailed info on the projects we offset through can be found [here](#). Do let your acquaintances know of this possibility to affect positive climate change for a very low price: if they don't believe you, it's possible to do a dry run here too! Some users do their offsetting together with children/housemates as a fun way of learning and gaining understanding too.

Caring Community

by Marcus Lindner, director
on behalf of CCC Management Committee



Needs assessment

A 2019 Needs Assessment for a Caring Community Coordinator was funded by the NFA, commissioned and completed with the following statistics: we are an aging community with 30% of our population between the ages of 55 and 64 compared to 16% in Scotland; 10 people are suffering with dementia or significant memory problems; 129 people provided support for vulnerable members with 95 of those being community members, family and friends. The report went on to state that "the community has to prepare for a rapid increase of people in need of care, including those living with dementia, as well as an increasing number of family members and friends looking after them.

Organisation activity

It has been a year filled with many changes in the Community Care Circle, now named the NFA Caring Community Circle (CCC), a Division of Park Ecovillage Trust. The beginning of the year brought the first iteration of change in organizational structure as we moved from a small group of "good-hearted" volunteers to groups and sub groups with named individuals holding key roles. By the end of the year and with collaboration, advice and assistance from many individuals and organizations, the CCC established a Management Committee which became the governing body and which reports directly to the PET board.

This year also included the following:

- ⊗ Educational events presented by the CCC which focused on mental health, anxiety and dementia.
- ⊗ The Rainbow Lodge residential project came to an end as the primary funder withdrew from the sale proceedings.
- ⊗ Policies and procedures established and revised to align with PET and potential funding strategies.
- ⊗ Vision, Mission and Aims established to more clearly define the CCC.
- ⊗ Two of our long associated friends in the CCC died this year.

Fundraising

The CCC has had a successful fundraising year beginning with international financial support for "Dorothy's Fund." In addition, we received a £2k anonymous donation to support a fundraising strategy, a £15k grant from Life Changes Trust for a dementia coordinator and a matching grant program to extend the coordinator's mission to include other vulnerable people within our community.

The funding has led to the hiring of our first Community Care Coordinator. This position, which has been funded for an initial 18 months, "will support and enhance the resilience of the community, the people in need of care as well as their families and friends."

Finance

by Fasil Bogale, director
on behalf of the Finance Group



Balance Sheet highlights

- ⊞ Total cash-in-bank at the end of the financial year, incl. savings account, was £81k. The balance includes restricted grants & donations of £57k for CCC Funds, £40k, and £17k for Adriana's Art Fund.
- ⊞ Total fixed assets of £1m.
- ⊞ £65.2k of fund are held for Caring Community Circle in PET's books including the Endowment Fund of £46.8k.
- ⊞ Total outstanding loans as at March 2020 was £532k plus other liabilities of £332k for Duneland LTD - Section 75 & RHF Scottish Government Grant.
- ⊞ Total loans repaid over 2019/20 financial year - £20,276
- ⊞ PET borrowed £20k from Ekopia to finance the New North Whins project.
- ⊞ Total Net Asset of the charity as at March 2020 was £167,634.

Profit&Loss highlights

Revenue

- ⊞ Actual total financial year income for the year was £114k, a £60k increase compared with the budget. This was mainly due to an unbudgeted Caring Community Circle Dorothy Maclean Fund donations and other grants, Carbon Offset purchases (1.4k) and income from West Whins Common House.
- ⊞ During the year PET received £6,000 of donation for community affordable housing from sales of Park based properties (2% of sale price). The amount received was utilised to kickstart the North Whins project.

Direct Housing costs

- ⊞ Total interest paid on loans during the year was £21k, up by £300 from budget.
- ⊞ Housing manager – total costs of £500 for the year, under budget by £1.6k, due to having no fixed monthly costs from NFD.

- ⊞ Repairs & Maintenance – over budget by £2k, mainly due to heating system and other repairs in East Whins.
- ⊞ Legal fees – unbudgeted costs for West Whins securities.
- ⊞ North Whins Project development costs of £8k – in line with the separate project budget

Other overheads

- ⊞ Carbon Strategy/Climate Initiative expenses – in line with income received from carbon offset purchases and other donations from previous years.
- ⊞ Other expenses are more or less on budget.
- ⊞ PET made a surplus of £14,644 in 2020 before depreciation in line with the budget.

Please choose PET to receive your (tax deductible) [charitable donations](#) this year.

Company Limited by Guarantee, registered in Scotland as
Company No: SC354855 and Charity No: SC041279
Registered Office: 45 The Park, Findhorn, Forres IV36 3TZ



Example is the surest way to effect change in your Community



Park Ecovillage Trust, October 2020